

Career Exploration & Skills Training Using Virtual Reality, AR & AI





The Future is Now

[Technology in our lives - video](#)





**Offer More Than
A Skillset. Offer
A Mindset.**



Transform the World

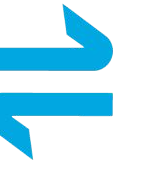


TRANSFR'S MISSION

Everyone should be able to find a well-paying job and a path to prosperity.

Transfr is building a classroom-to-career pipeline by delivering simulation-based training that equips learners with the skills needed to enter the workforce successfully.

[Here's a link to Transfr's Overview Video!](#)



Workforce Development

Improving the classroom-to-career pathway



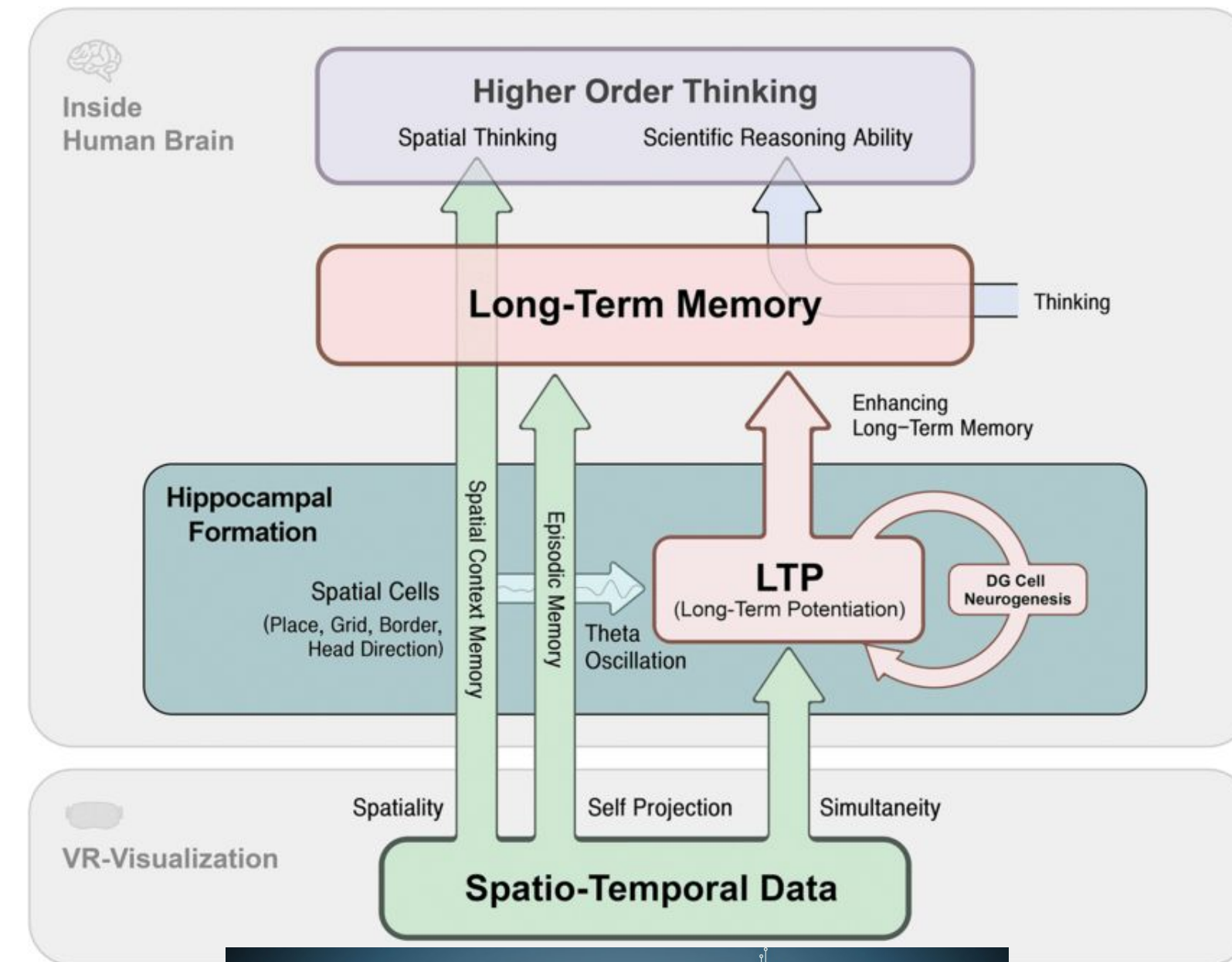
Immersive Work-Based Learning

Hands-on career exploration & training in virtual reality via scalable models provide:

- Increase safety of students & trainees by providing hands-on exploration & training virtual modules in a risk-controlled environment
- Improve the quality of career exploration & workforce development
- [Virtual reality can boost brain rhythms crucial for neuroplasticity, learning & memory](#) *
- Help individuals continue on a sustainable career pathway to thrive through increased efficiencies & effectiveness of training.
- Decrease operational costs on consumable materials
- Instructors & Employers screen individuals for interest in particular careers, improving trainee placement and job retention

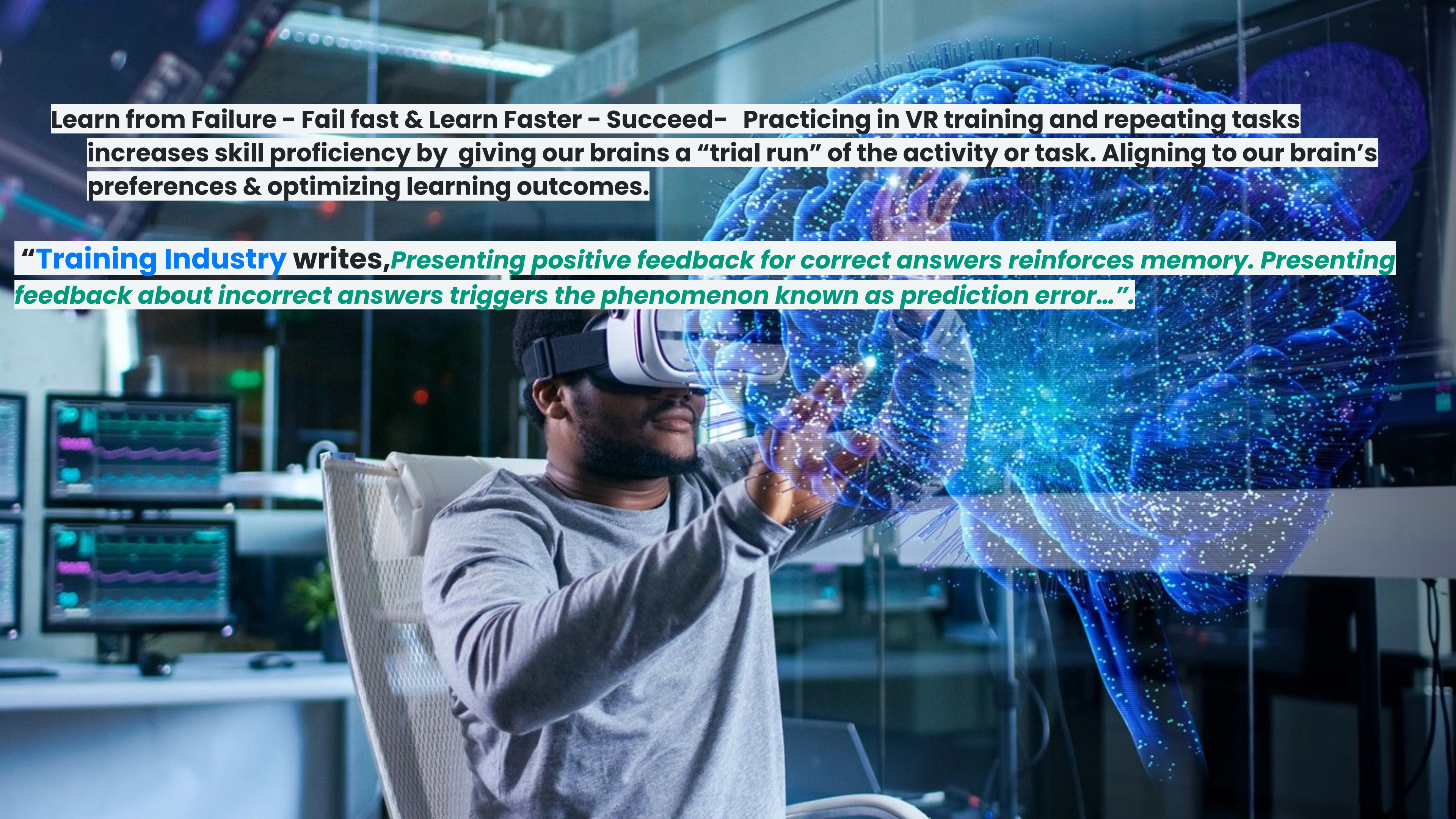
Immersive Work-Based Learning On The Brain

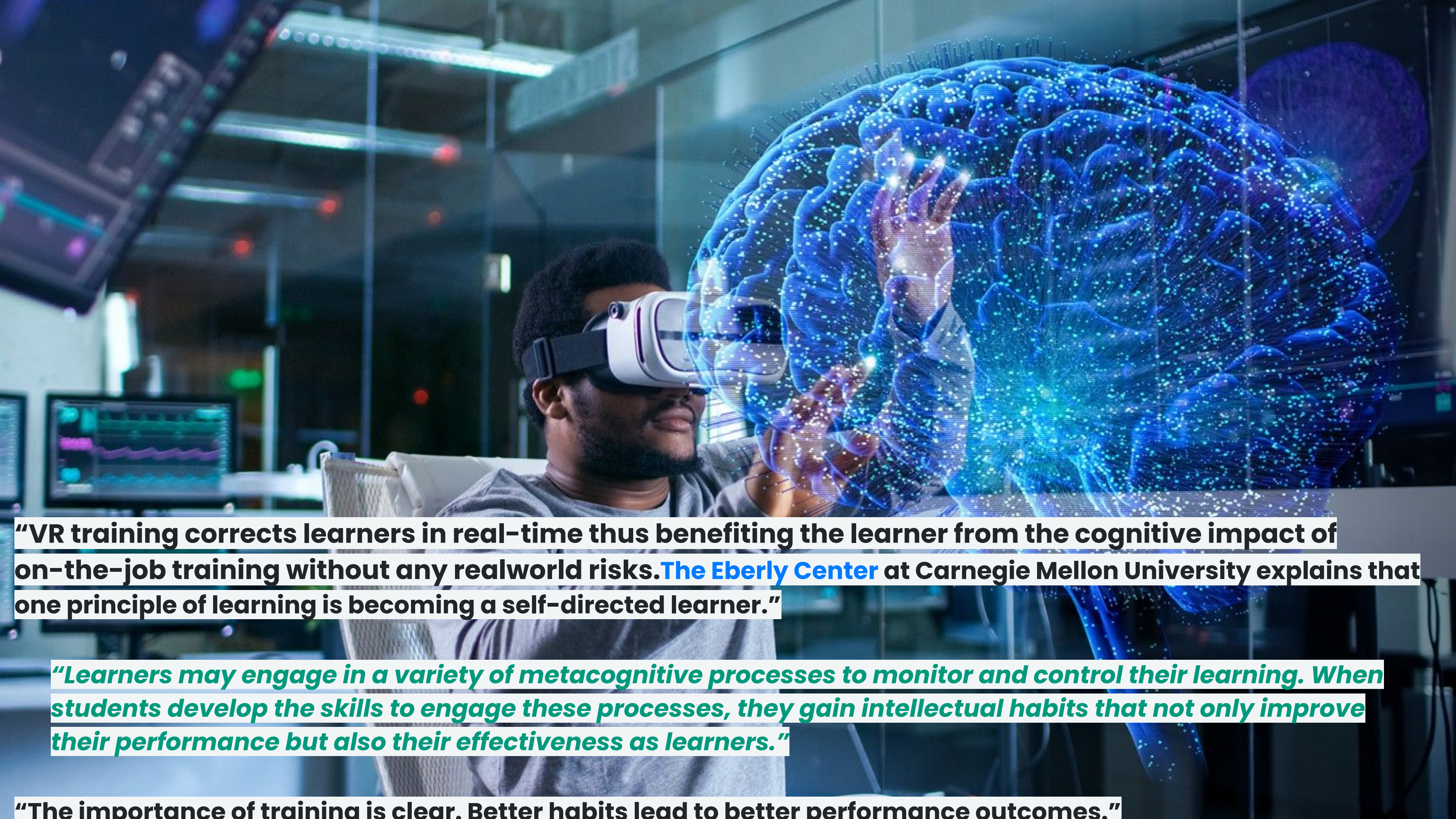
- In a study, “VR strengthened local mutual interactions, activated more robust and extensive pathways among functional modules, and improved global integration, global segregation, and local segregation simultaneously.”*
- “Virtual reality (VR) simulates an artificial sensory world where users can interact with various virtual items and environments, emerging as an integrated stimulus, especially in the cortical system.... This flexible, immersive, and user-friendly interaction technology can improve cognitive and memory functions ...
- This functional improvement is achieved by activating neuroplasticity, the process by which the cortex encodes experiences and learns new behaviors in response to environmental changes” ...



Learn from Failure – Fail fast & Learn Faster – Succeed– Practicing in VR training and repeating tasks increases skill proficiency by giving our brains a “trial run” of the activity or task. Aligning to our brain’s preferences & optimizing learning outcomes.

“Training Industry writes, *Presenting positive feedback for correct answers reinforces memory. Presenting feedback about incorrect answers triggers the phenomenon known as prediction error...*”.





“VR training corrects learners in real-time thus benefiting the learner from the cognitive impact of on-the-job training without any realworld risks. [The Eberly Center](#) at Carnegie Mellon University explains that one principle of learning is becoming a self-directed learner.”

“Learners may engage in a variety of metacognitive processes to monitor and control their learning. When students develop the skills to engage these processes, they gain intellectual habits that not only improve their performance but also their effectiveness as learners.”

“The importance of training is clear. Better habits lead to better performance outcomes.”

Immersive Learning Benefits



**INTRO TO CAREER
PATHWAYS**

**INCREASED LEARNER
ENGAGEMENT**

**BUILD
CONFIDENCE**

RECRUITMENT

**DIFFERENTIATED
LEARNING**

**SKILLS TRAINING
& RELATED
MOTOR SKILLS**

**ENRICHED
PROGRAMMING**

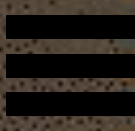
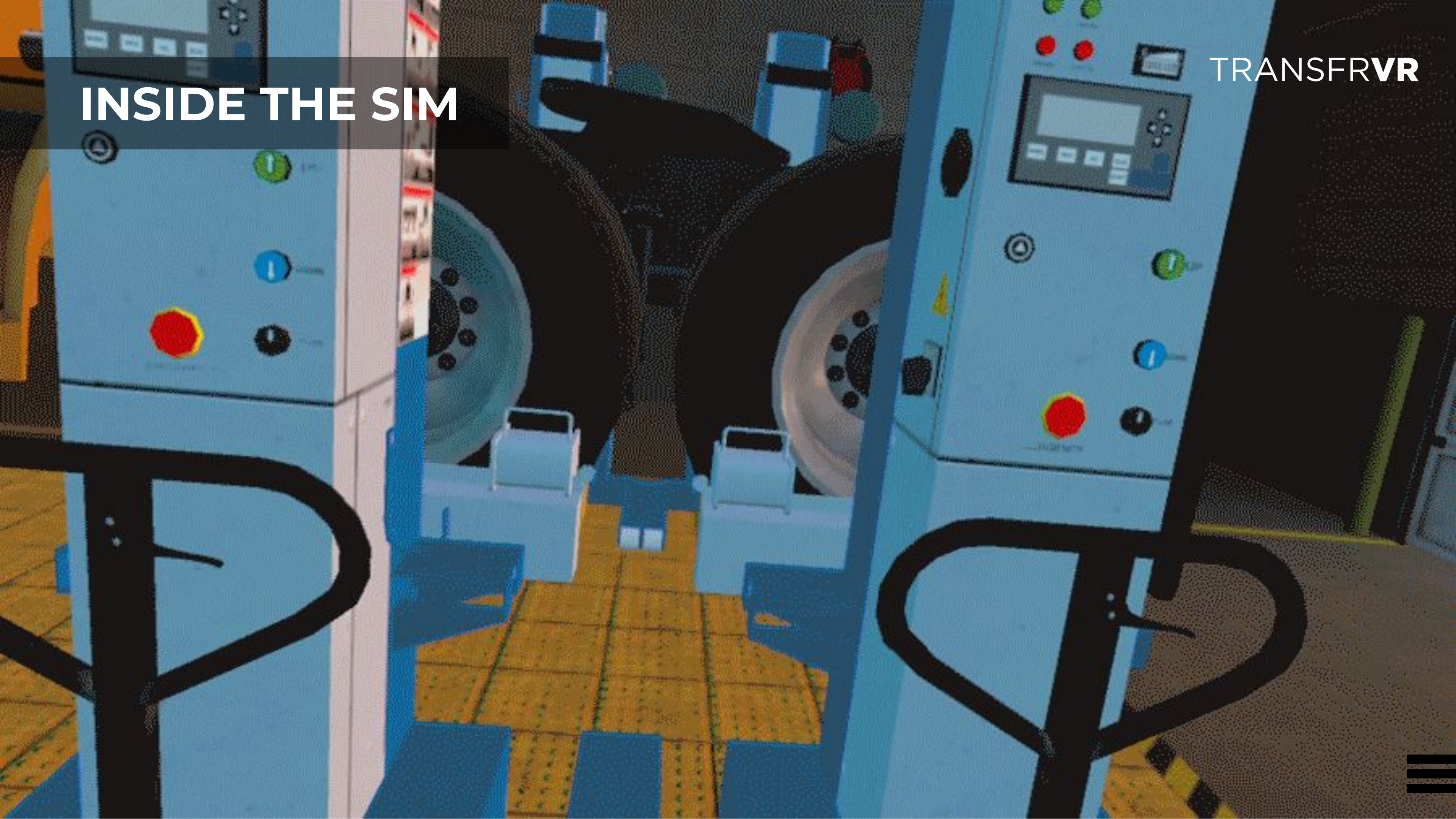
**COST
EFFECTIVE**

**INCREASED
INSTRUCTOR
CAPACITY**



INSIDE THE SIM

TRANSFRVR





Construction



Healthcare



**Aviation
Maintenance**



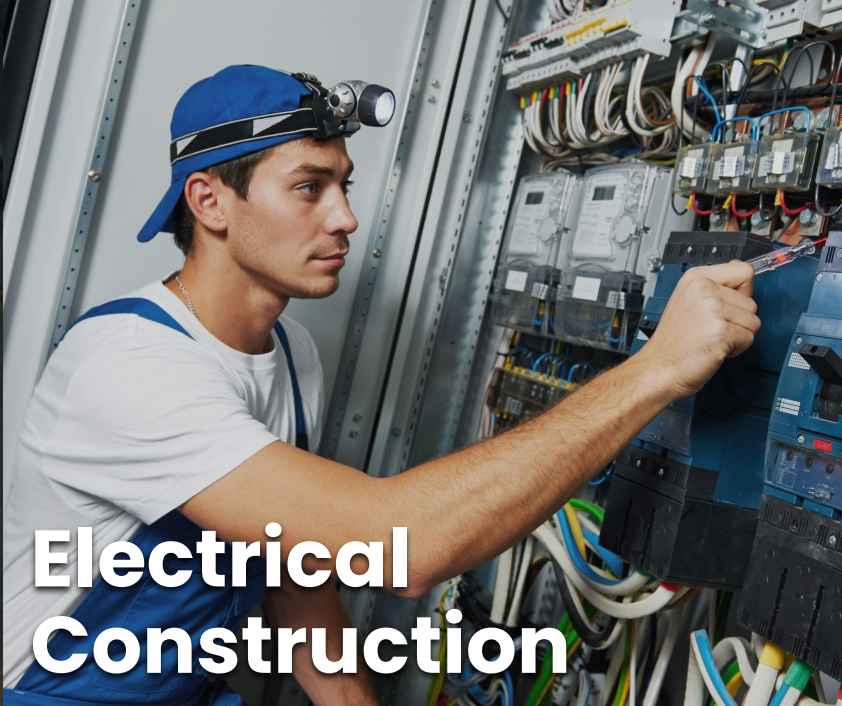
Automotive



Diesel Technology



Manufacturing



**Electrical
Construction**



**Hospitality &
Tourism**

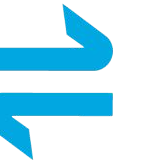
**CAREER
EXPLORATION**

Transfr Has Most
of the Nation's Highest-Growing
Job Sectors

And Growing Everyday!



2. Skills Training



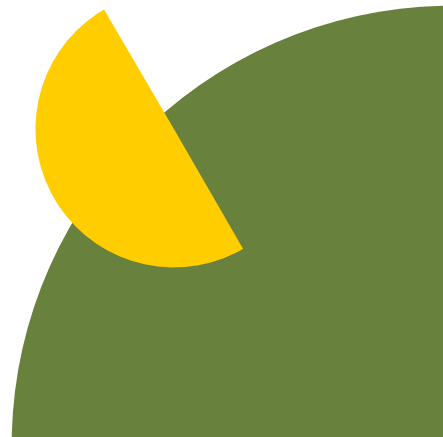
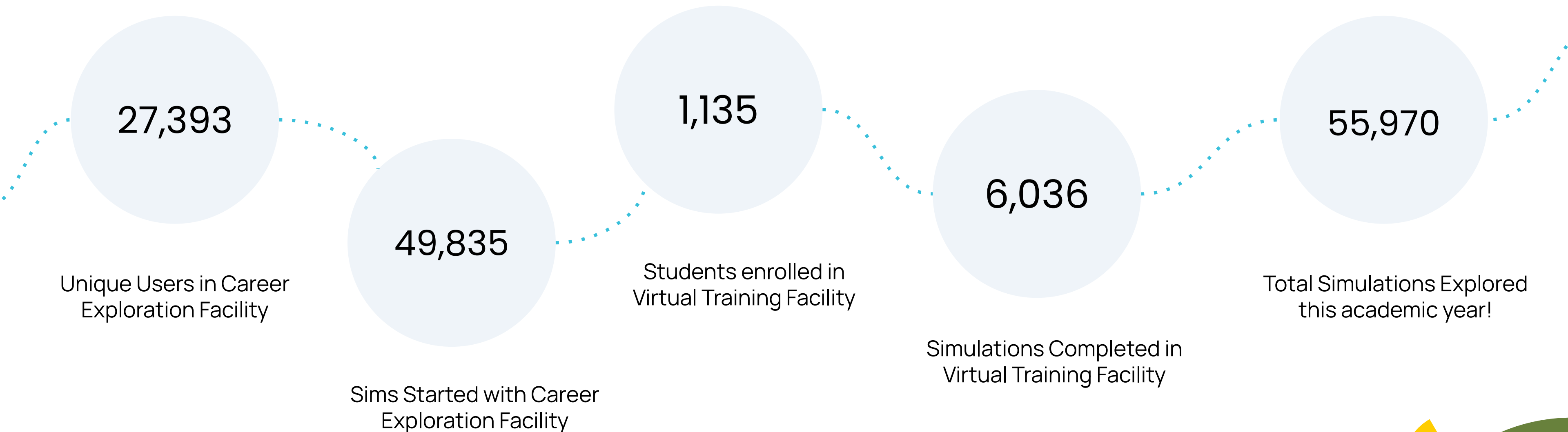
Master the skills that trainees need to get hired for well-paying jobs in a safe, supportive setting, under the expert guidance of Simon, our digital coach. Transfr has training simulations in the nation's top industries, and alignment to industry standards and certification bodies.



Here's a link to our full [Product Catalog!](#)

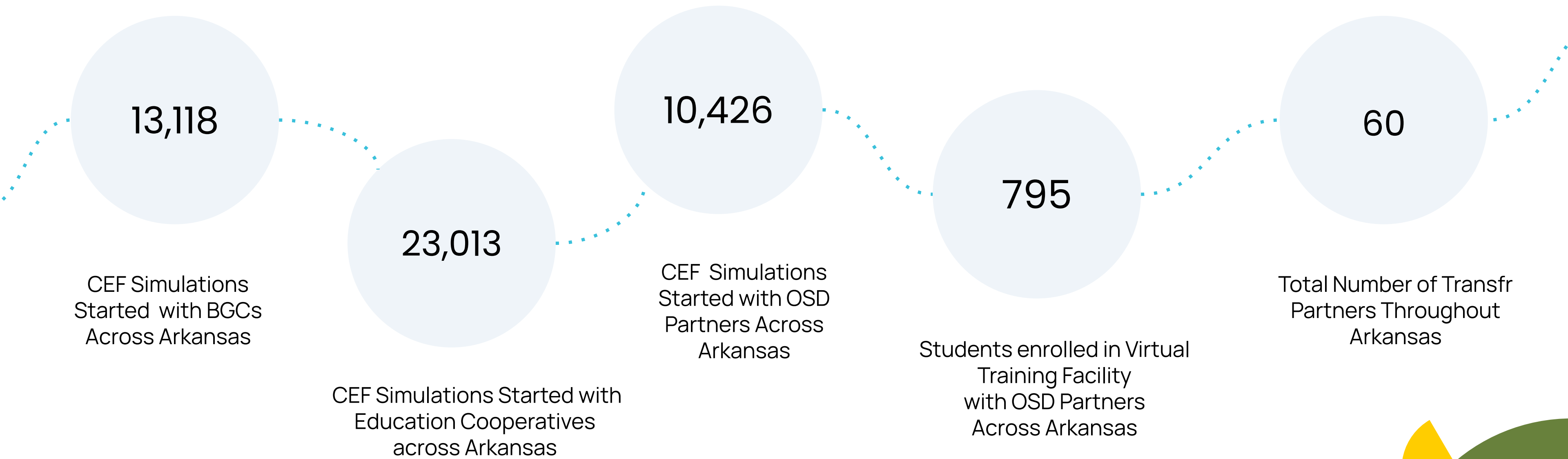
Arkansas State Data

Look at the impact you are making!



Data by Organization

Look at the impact you are making!



CEF Simulations Started with BGCs Across Arkansas

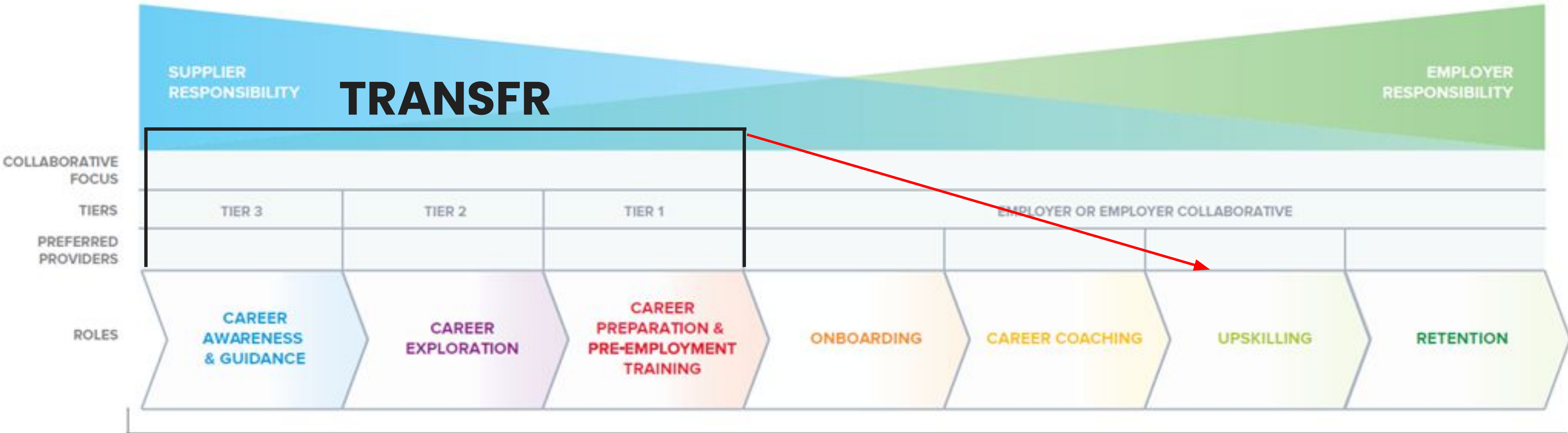
CEF Simulations Started with Education Cooperatives across Arkansas

CEF Simulations Started with OSD Partners Across Arkansas

Students enrolled in Virtual Training Facility with OSD Partners Across Arkansas

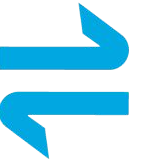
Total Number of Transfr Partners Throughout Arkansas

Career Continuum



Source: U.S. Chamber of Commerce - Talent Pipeline Management

A Rising Tide Lifts All Boats

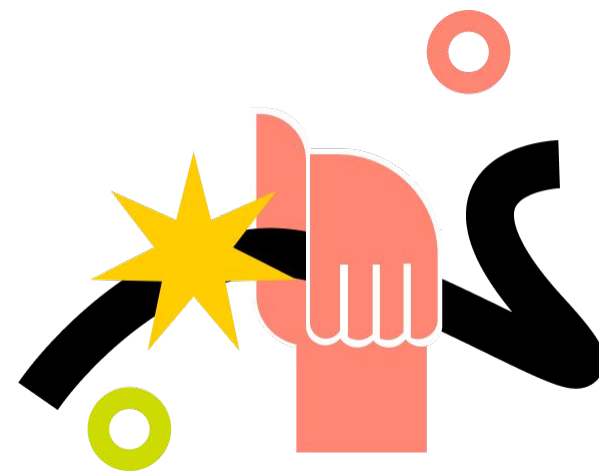


100% were offered jobs

100% of people completed training

100% started jobs

93% Still Employed



93%

● Of trainees in a program were still employed after 6 months vs. 30% from temp agencies

DIESEL SHOCK REPLACEMENT

[Diesel Simulation Video](#)



QUESTIONS?

Taj Mecham

Sr. Regional Director Workforce

Taj@transfrvr.com

801-901-8283



Immersive Learning Experience



1:1 ATTENTION

Give learners one-to-one attention with a digital coach who responds to their individual actions and gives specific feedback to guide them.

CONSISTENCY

The digital coach provides consistent instruction that doesn't vary based on an individual person's teaching style, location, or anything else.

CONFIDENCE

Provide patient, encouraging instruction that builds confidence, making it okay to fail and rewarding to succeed.

SKILL MASTERY

Hands-on simulation-based training gives learners a true experience of the job, ensuring they're ready for work on day one.

EFFECTIVE

Hands-on simulation-based teaching gives you the ability to perform real-world training without an expensive physical facility.

1. Career Exploration

Construction & the Skilled Trades

Career Experiences Include:

- Carpenters
- Machinists
- Metal Workers
- Electricians
- Welders

MANUFACTURING

Career Experiences Include:

- Robotics Specialists
- Site Safety Specialists
- Assemblers
- Maintenance And Repair Workers
- Quality Assurance Specialists

TRANSPORTATION & DISTRIBUTION LOGISTICS

Career Experiences Include:

- Warehouse Inventory Receiving Specialists
- General Warehouse Workers
- Hoist/Crane Operators

LAW, PUBLIC SAFETY, CORRECTIONS & SECURITY

Career Experiences Include:

- Emergency And Fire Management Services

HOSPITALITY & TOURISM

Career Experiences Include:

- Hotel Front Desk Clerks

Available Now!

1. Registered Nurse
2. Surgical Technologist
3. Semiconductor Manufacturing Technician
4. Broadband Tower Construction
5. Solar Technician
6. Broadband Utility Construction
7. Welder
8. Distribution Line Worker
9. Transmission Line Worker
10. Network Technician
11. Emergency Medical Technician
12. Electrician



What's Included



CUSTOMER SERVICES

Transfr offers a mix of live, online training and planning resources, in addition to training webinars, 1-on-1 office hours.

TECHNICAL SUPPORT

In addition to Customer Services, Transfr offers US-based online, email, and phone support to assist with any issues.

EQUIPMENT

VR equipment is included in the license. All you need is access to Wifi for the technology to work.

ANNUAL ACCESS

Licenses are provided annually depending on your subscription level, with multi-year contracts available (with discounts). Any new simulations or updates are automatically downloaded to your headsets.

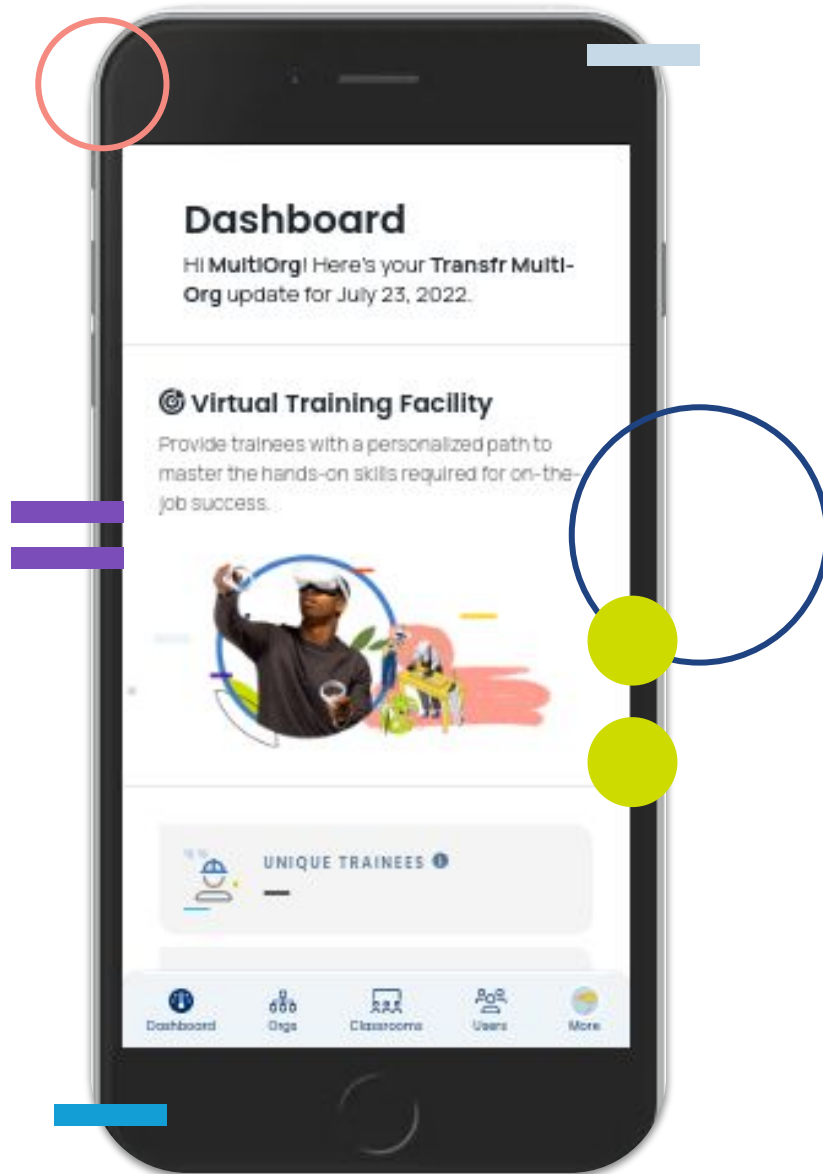
DATA ANALYTICS

For VTF customers, our dashboard provides on demand access to data and reports for measuring the effectiveness of the program.





Measurable Results & Assessment Data



Insights

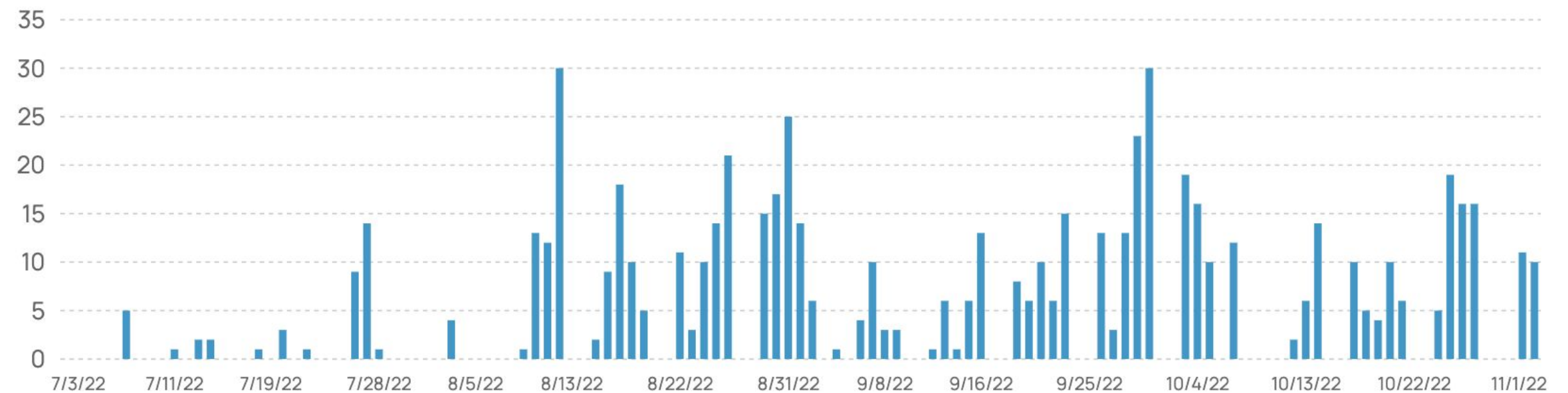
Filter by Organization

Export Data (.csv)

 **UNIQUE TRAINEES** i
272

 **SIMS COMPLETED** i
2.68K

 **SIMS MASTERED** i
1.51K



July 2, 2022 to November 1, 2022

30 days 60 days 1 year

[Dashboard PDF Link!](#)

PHYSICAL TRAINING CENTER VS. VR LAB



\$1 MILLION

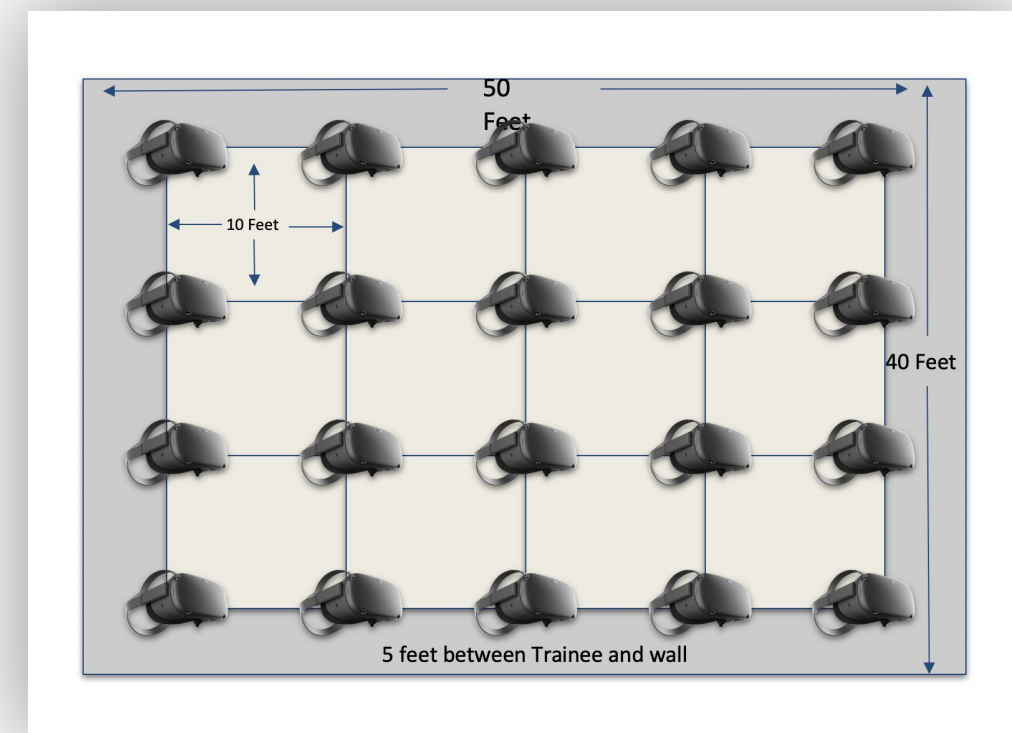
+

**PHYSICAL LAB
COST TO BUILD**

\$50K

VR LAB

- *A VR Lab can be stood up in any location with WiFi - a middle school, high school, a 2 year college, career center or job site.*
- *Lower cost of consumables (for example, buying paint in the Automotive department!)*
- *Hours saved for facilitators, providing differentiation of learning.*
- *Technology is deflationary.*



MDM System Overview



What is MDM?

- Mobile Device Management

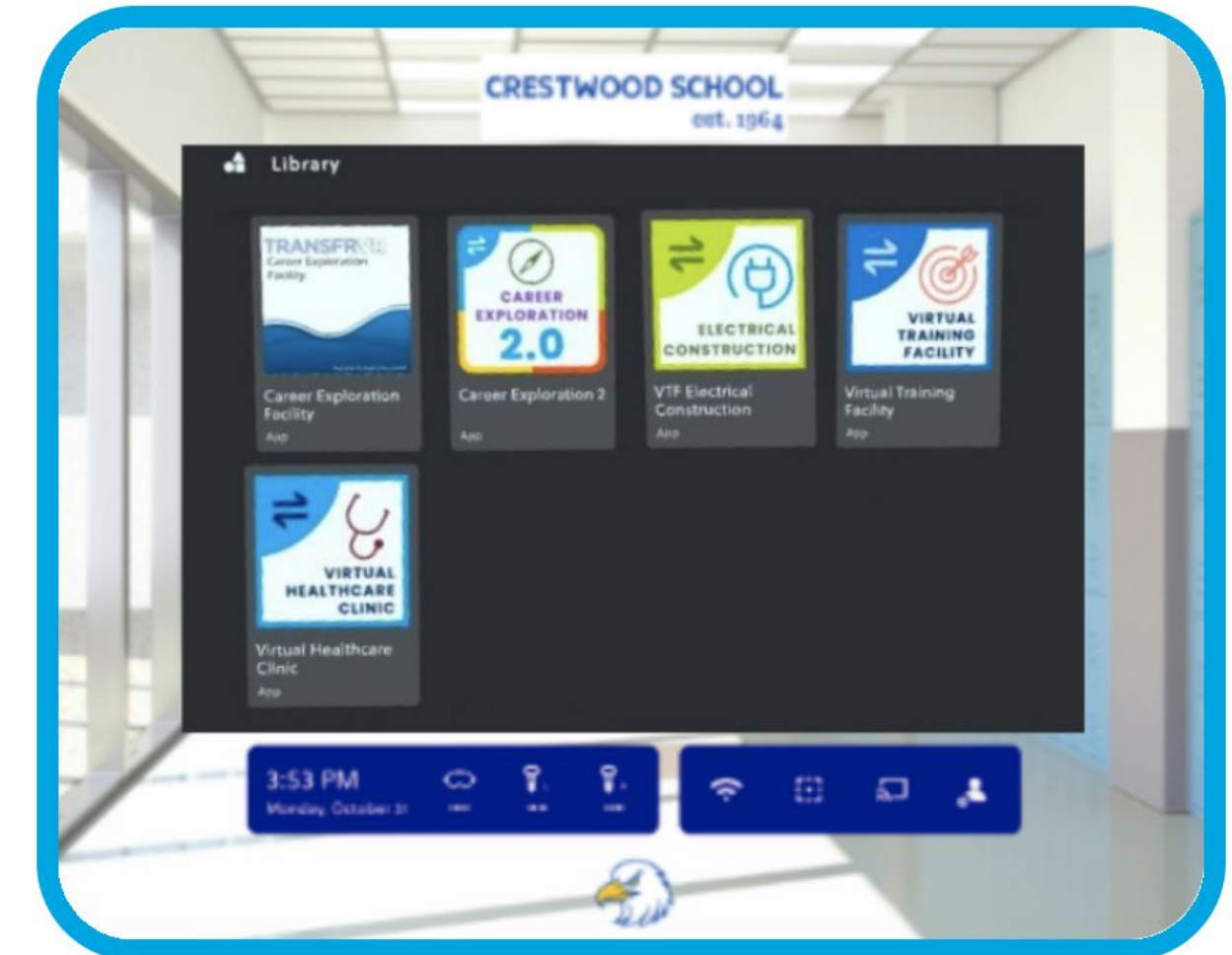
Why do we need a MDM?

- To utilize Transfr apps on your headsets

What is the benefit of using a MDM on your VR headsets?

- Easy device management
- more control over views
- customized device experience
- Branding

Custom Kiosk View



Using your VR headsets with Transfr



Consult with Transfr to confirm approved hardware and available MDM options.



Transfr's Technical Support Team will work with your organization to set up your selected MDM.



Transfr will provide access to install apps on your selected MDM.



Easily deploy Transfr apps and remotely manage your entire fleet at once.



Customize your headset experience by adding a logo or creating a background.





TRANSFR SOLUTIONS AT WORK: CUSTOMER STORIES

[K-12 & CTE Enrollment](#)

[Skills Training & Apprenticeship](#)

[Learners of All Abilities](#)

[Nonprofits Serving Veterans](#)

[Student Reactions](#)

● [Workforce Development](#)

